

EPSON Robot GYROPLUS™ Technology

Taking robot performance to the next level

EPSON

Unlock the next level of automation performance with GYROPLUS technology!

GYROPLUS technology uses proprietary quartz-based gyro sensors combined with MEMS (microelectromechanical systems) processing technology to correct and dampen performance reducing vibrations.

These benefits can increase production across a wide range of industries, including automotive, life sciences, electronics, and packaging.

Discover how reducing vibration and optimizing speed, payload, and precision can transform your operations.



Learn More About GYROPLUS Technology

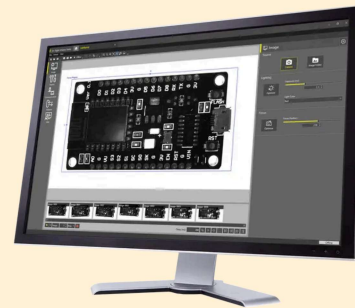
Cognex In-Sight Vision Suite Software

Unified software platform for all In-Sight products

COGNEX

The In-Sight Vision Suite is a unified software platform for the entire In-Sight product line, offering the industry's largest set of AI and rule-based vision tools for any inspection need.

Unlike other vision system providers that require different tools and workflows for every device, Cognex provides a single, seamless interface across all In-Sight machine vision devices. A standardized environment simplifies development and scales deployment – from basic inspections to complex, high-performance applications across multiple lines and facilities.



Bertelkamp Automation offers Machine Vision training workshops.

Learn More About Our In-Sight Vision Suite Training

UR18 Compact, Heavy-Duty Cobot

Built to deliver power and efficiency

**UNIVERSAL
ROBOTS**

The UR18 combines strength and agility, supporting larger end effectors to lift heavier payloads while remaining light enough for easy mounting on most standard gantry systems. With a 950 mm reach and speeds up to 4 m/s, it's ideal for fast-paced pick-and-place deployments where reducing cycle times is crucial.



The UR18 is built to deliver both power and efficiency, making it the perfect choice for manufacturers who need to move more faster.

[Learn More About UR18 Cobots](#)

Introducing Two New Palletizing Solutions



Robotiq's *PAL Ready* and *PAL Series*

PAL Ready is a production-ready palletizing cell. It is fully assembled, tested, and ready to run on arrival. It helps you automate with confidence, even on your very first cell. PAL Ready includes everything you need and is designed for rapid installs.

It comes with a Robotiq Smart Infeed, allowing you to present any box to the palletizer at the right time and at the right place, automatically. It ensures an optimal output of the palletizer with minimum programming intervention.



PAL Series is all about modular palletizing. It's a configurable option built from our standard models (the AX or PE Series) and modules (Robotiq Vacuum Grippers, Smart Infeed, Safety Packages, and Mobility Kits). For greater flexibility, the PAL Series offers a modular, configurable system with a consistent software platform and interface.

[Learn More About Palletizing Solutions](#)

Bertelkamp Automation | 800-251-9134 | info@bertelkamp.com | bertelkamp.com

Bertelkamp Automation, Inc | 4716 Middle Creek Lane | Knoxville, TN 37921 US

[Unsubscribe](#) | [Update Profile](#) | [Constant Contact Data Notice](#)



Try email marketing for free today!